

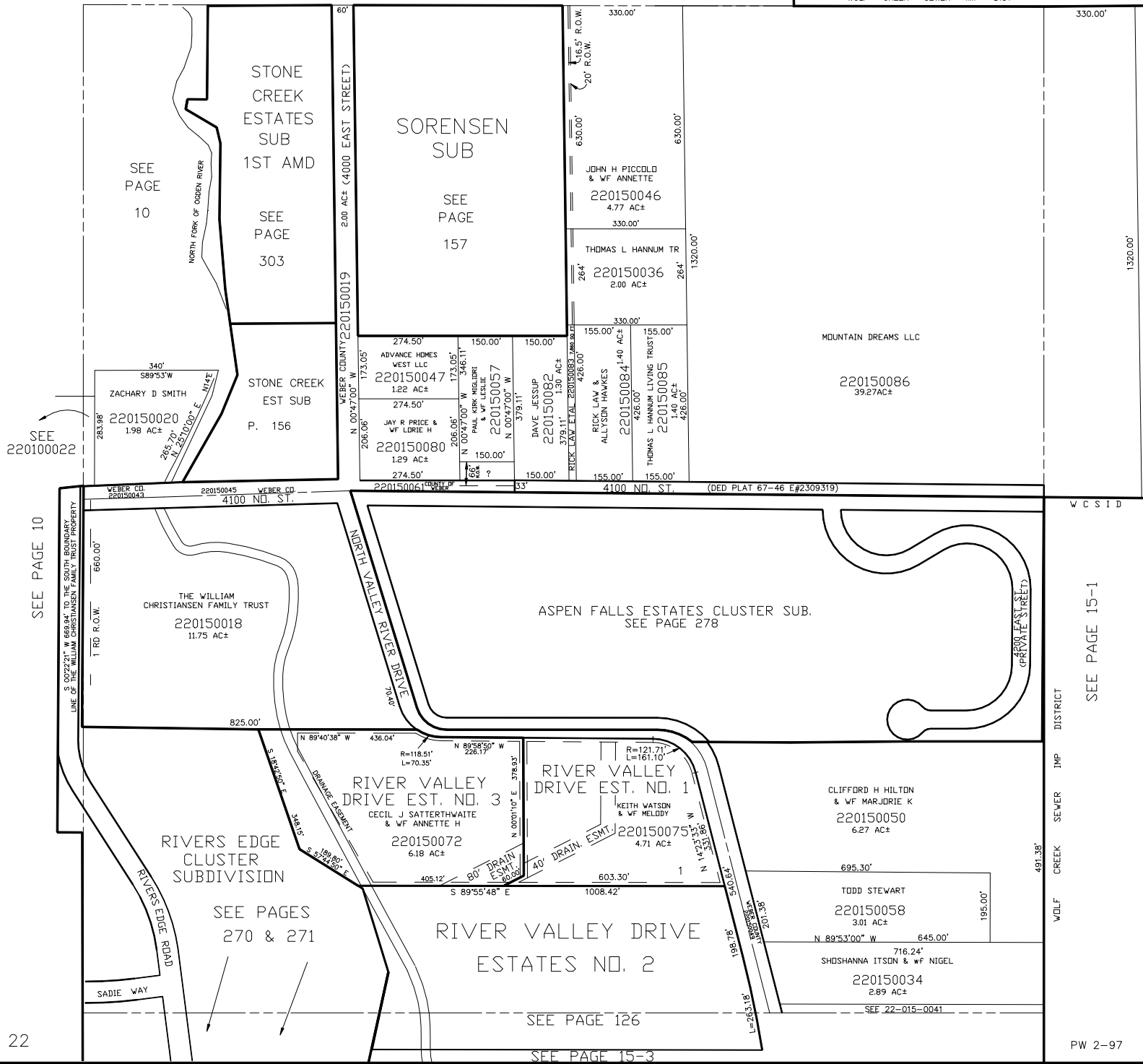
N.W. 1/4
SECTION 21, T.7N., R.1E., S.L.B. & M.

LIBERTY DISTRICT
SCALE 1" = 200'

TAXING UNIT: 36

SEE PAGE 6

WOLF CREEK SEWER IMP DIST



SEE PAGE 10

STONE CREEK ESTATES SUB 1ST AMD
SEE PAGE 303

SORENSEN SUB
SEE PAGE 157

JOHN H PICCOLO & WF ANNETTE
220150046
4.77 AC±
330.00'

THOMAS L HANNUM TR
220150036
2.00 AC±
330.00'

MOUNTAIN DREAMS LLC
220150086
39.27AC±

ZACHARY D SMITH
220150020
1.98 AC±

STONE CREEK EST SUB
P. 156

ADVANCE HOMES WEST LLC
220150047
1.22 AC±

JAY R PRICE & WF LORIE H
220150080
1.29 AC±

PAUL MIKIK HIGLIRI & WF LESLIE
220150057
1.50 AC±

DAVE JESSUP
220150082
1.30 AC±

ALLYSON HAWKES
220150084
1.40 AC±

THOMAS L HANNUM LIVING TRUST
220150085
1.40 AC±

VEBER CD. 220150043

VEBER CD. 220150045

VEBER CD. 220150061

4100 ND. ST. (DED PLAT 67-46 E#2309319)

WC SID

THE WILLIAM CHRISTIANSEN FAMILY TRUST
220150018
11.75 AC±

ASPEN FALLS ESTATES CLUSTER SUB.
SEE PAGE 278

RIVER VALLEY DRIVE EST. NO. 3
CECIL J SATTERTHWAITTE & WF ANNETTE H
220150072
6.18 AC±

RIVER VALLEY DRIVE EST. NO. 1
KEITH WATSON & WF MELODY
220150075
4.71 AC±

CLIFFORD H HILTON & WF MARJORIE K
220150050
6.27 AC±

RIVERS EDGE CLUSTER SUBDIVISION

SEE PAGES 270 & 271

RIVER VALLEY DRIVE ESTATES NO. 2

SEE PAGE 126

TODD STEWART
220150058
3.01 AC±

SHOSHANNA ITSDN & WF NIGEL
220150034
2.89 AC±

SEE 22-015-0041

WOLF CREEK SEWER IMP DISTRICT

SEE PAGE 15-1

PW 2-97

SEE PAGE 15-3